

# THE MONTGOMERY BAPTIST



Serving Christ Through Montgomery Area Churches

KEN MAY, DIRECTOR OF MISSIONS • THURSDAY, OCTOBER 11, 2007

## A Personal Word



Ken May

What's wrong with this picture? Well, other than the subject! It's dated! It's old! The sports coat is just plain "tacky!" After all, I'm over 25 years older. I don't dress

like that now. (It was even a hand-me-down coat!) A couple of weeks ago Gene Haynes retrieved this photo and your fine MBA staff had it placed on a mockup of this newsletter, telling me it had been sent out. We all had a laugh, and, of course, I knew it had not been used. But then, given all I have been writing about in this column over the past several months, I had an inspiration. Here it is...

This picture matches the approaches, methodology, décor and worship of some churches. Yes, I know it's too modern for some, but it does match some others. The photo was taken in the early 1980's. Many churches have building designs, worship styles, outreach efforts and church management approaches that have not changed significantly since the 1950's, 60's, or 70's. Is it any wonder that these churches are having difficulty in reaching people? Churches that get locked into a time-frame era often can only reach those who are nostalgic for that era (and most of them already have their church). But look at us! We haven't rejected the new technology for our personal lives. We have the latest in cell phone, text messaging, and computer technology. We drive cars equipped with GPS, DVD players, and all other sorts of computer operated gadgets. It seems that we just want our church to be a fond memory from the past that we relive each Sunday we attend.

There is a time for remembering in church. One such instance is our observance of the Lord's Supper. Other occasions are when we recognize historical moments in church

life. BUT, the rest of the time we should be as contemporary as we can be IF we desire to reach our world.

Thirty years ago when I began serving in campus ministry, we didn't even have a calculator. Getting an old "Selectric" typewriter was a blessing. There is no way I could operate with that equipment today. We are accustomed to using the very latest in technological advances to assist our churches in reaching our modern world.

SO, enjoy the photo at my expense. But, think about *The Present Future* and your church. Come hear the author and church leader, Reggie McNeal, at our Annual Celebration at Ridgecrest on Monday. I hope to see you there!

*Ken*

### Minister's Conference

Lunch \$5

October Schedule

#### Oct. 22 - First Southern Hope Hull

1125 Wasden Rd., Hope Hull  
Speaker: Johnny Rush  
Music: Chuck Francisco  
Call 284-5200 for reservations by Oct. 18.

#### Oct. 29 - Memorial Heights

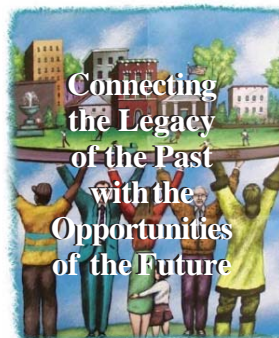
3182 Bozeman Dr.  
Speaker: Rick Marshall  
Music: Tom Snowden

### Special Session of Minister's Conference at Annual Celebration with Reggie McNeal 3:00 - 4:30 p.m.

Some of Reggie's possible topics include:

- The Collapse of the Church Culture
- The Shift from Church Growth to Kingdom Growth
- A New Reformation: Releasing God's People
- The Return to Spiritual Formation
- The Shift from Planning to Preparation
- The Rise of Apostolic Leadership

## 126<sup>th</sup> Annual Celebration Monday, October 15th



### Ridgecrest Baptist Church

5260 Vaughn Road,  
Montgomery, AL



Ridgecrest Baptist Church

5:00 p.m. Finger Food Fellowship & Missions Displays -

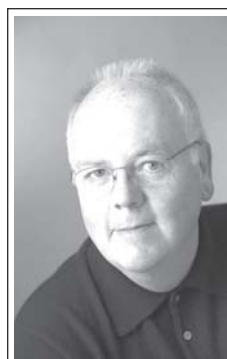
Family Life Center

6:15 p.m. Musical Prelude - Sanctuary

6:25 p.m. Annual Session Begins - Sanctuary

"Behold, I am doing a new thing, now it springs forth, do you not perceive it?"  
*Isaiah 43:19 (RSV)*

### Special Guest Dr. Reggie McNeal



Reggie McNeal

Reggie enjoys helping people, leaders, and Christian organizations pursue more intentional lives. He currently serves as the Missional Leadership Specialist for Leadership Network of Dallas, TX. Reggie's past experience involves over a decade as a denominational executive and leadership development coach. He also served in local congregational leadership for over twenty years, including being the founding pastor of a new church. Reggie has lectured or taught as adjunct faculty for multiple seminaries, including Fuller Theological (Pasadena, CA), Southwestern Baptist (Ft. Worth, TX), Golden Gate Baptist (San Francisco, CA), Trinity Divinity School (Deerfield, IL), and Columbia International (Columbia, SC). In addition, he has served as a consultant to local church, denomination, and para-church leadership teams, as well as seminar developer and presenter for thousands of church leaders across North America. He has also resourced the United States Army Chief of Chaplains Office, Air Force Chaplains, and the Air Force Education and Training Command. Reggie's work also extends to the business sector, including The Gallup Organization.

Reggie has contributed to numerous denominational publications and church leadership journals, including *Leadership* and *Net Results*. His books include *Revolution in Leadership* (Abingdon Press, 1998), *A Work of Heart: Understanding How God Shapes Spiritual Leaders* (Jossey-Bass, 2000), *The Present Future* (Jossey-Bass, 2003), *Practicing Greatness* (Jossey-Bass, 2006), and *Get A Life!* (Broadman & Holman, release date Spring 2007).

Reggie's education includes a B.A. degree from the University of South Carolina and the M.Div. and Ph.D. degrees both from Southwestern Baptist Theological Seminary.

Reggie and his wife, Cathy, have two daughters, Jessica and Susanna, and make their home in Columbia, South Carolina.

**Coming soon...**  
**Convoy of Hope**  
November 17  
Watch for details in  
upcoming issues.